



**SPENCER JAMES**  
RESIDENTIAL

8 Hartlepool Court | London E16 2RL  
T: +44 (0) 20 7474 3636  
E: mail@spencer-james.co.uk  
www.spencer-james.co.uk



**\*\* Large One Bedroom Apartment \*\***

**\*\* Close To Amenities & Transport Link \*\***

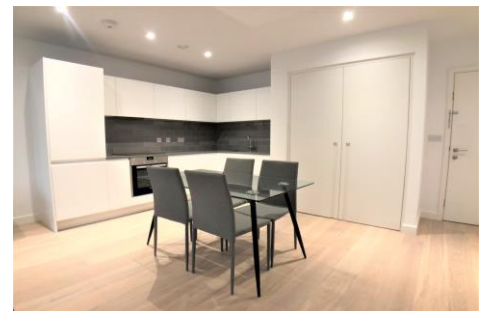
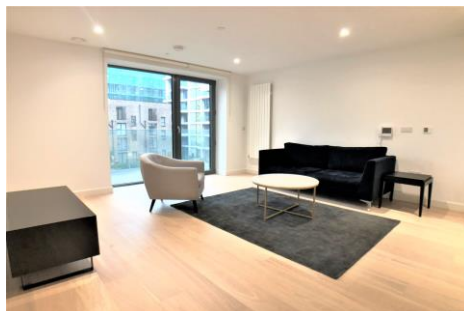
**\*\* Available August \*\***

**\*\* Residents Gym/Pool \*\***

**\*\* Onsite Concierge/ 24 Hour Security \*\***

**\*\* Council Tax D £1,532 \*\***

**\*\* EPC Rating B \*\***



**Fairwater House, London**

**Monthly Rental Of £1,995**



Available to move into August is this large one bedroom apartment in the stunning Royal Wharf development on the banks of the River Thames. The property is offered fully furnished with built in wardrobes, storage cupboards, large bathroom with an open plan kitchen / living area.

**Lounge Diner**

Laminate flooring, wall mounted radiator, double glazed window to rear, double glazed door to balcony, open plan to kitchen.

**Kitchen**

Range of eye and base level units, sink with mixer tap over, tiled splash back, laminate flooring, integrated appliances including electric hob with extractor fan over, dishwasher, fridge freezer, electric oven, open plan to Lounge/Diner.

**Bedroom**

Double glazed window to rear, carpet flooring, wall mounted radiator, built-in wardrobe.

**Bathroom**

Three piece suite comprising of low level wc, wash basin with mixer tap over, bath with mixer tap over, shower control with shower head over, shower screen, part tiled, wall mounted towel rail.

**Balcony**

Private Balcony With Court Yard Views

**Central Heating**

Wall Mounted Radiators Throughout

**Double Glazing**

Fully Double Glazed Throughout



SPENCER JAMES  
RESIDENTIAL







**SPENCER JAMES**  
RESIDENTIAL